
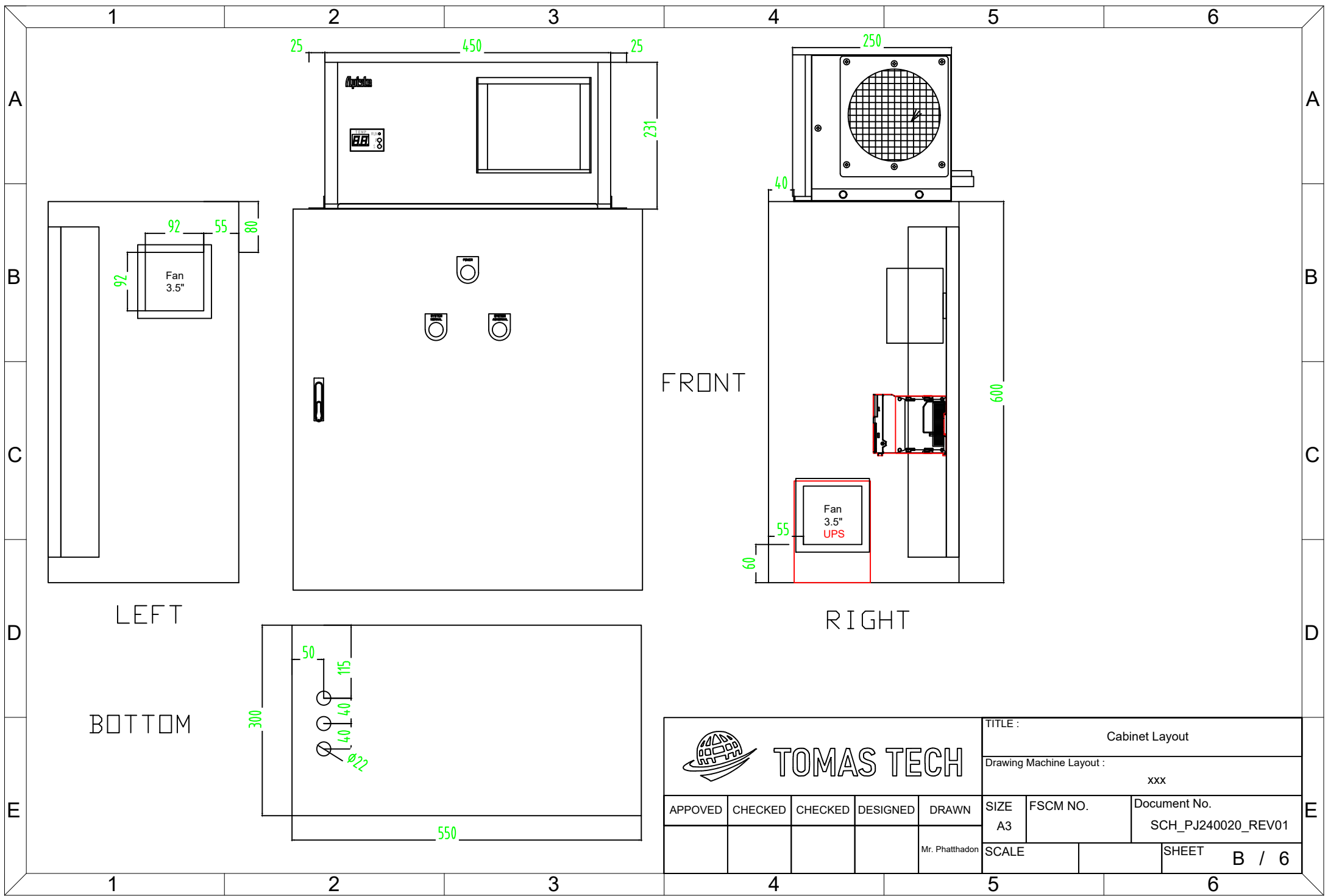



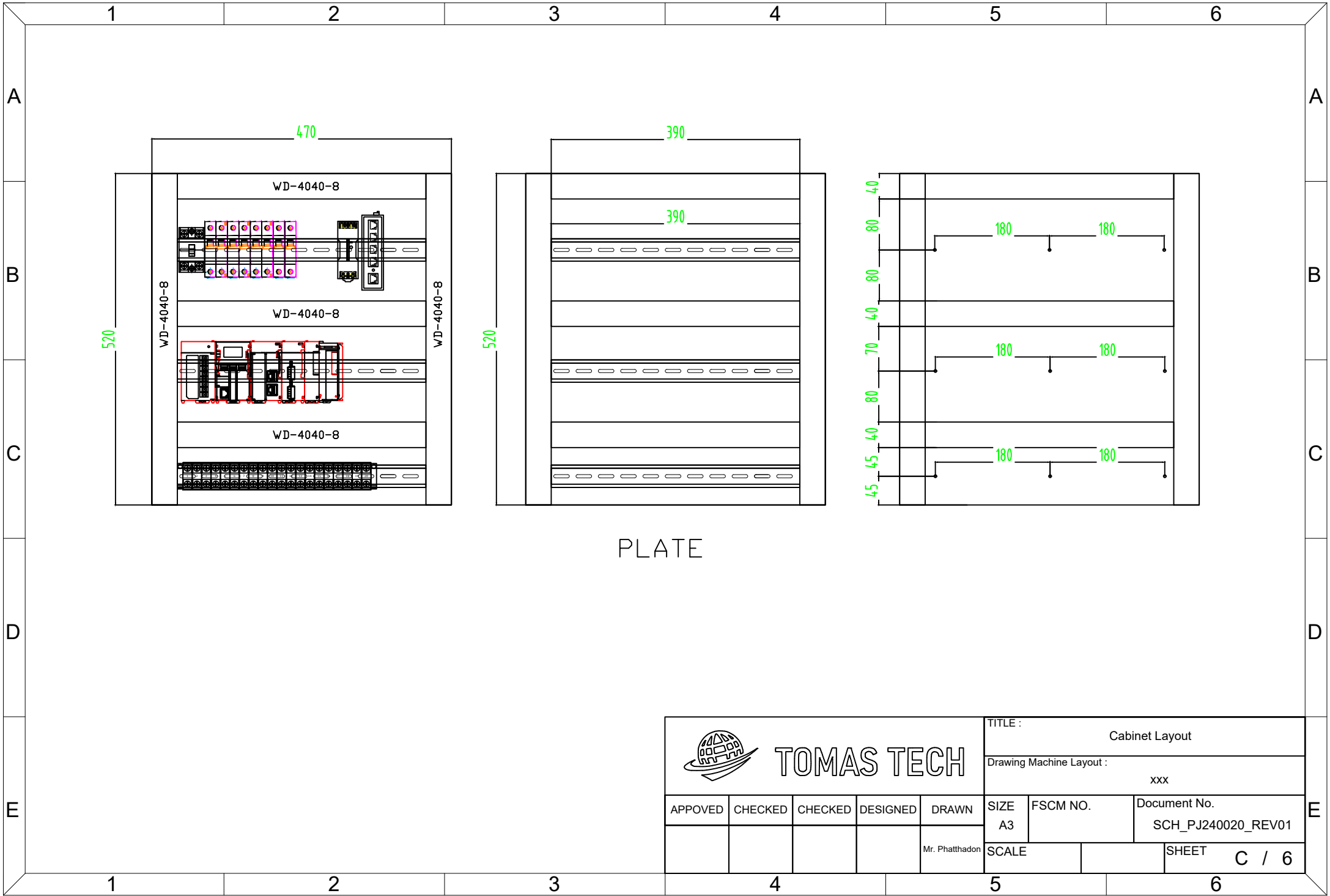
	1	2	3	4	5	6				
A	<div>ELECTRICAL DRAWING DIAGRAM</div>  <div>PROJECT : INFRASTRUCTURE IoT SYSTEM FOR OTICS(Thailand)</div>				REVISIONS RECORD		A			
B					SYM	DESCRIPTIONS	DATE Y/M/D	WHO CHANGE DR.NAME	CHECKER	B
C					△1					C
D					△2					D
E							E			
	1	2	3	4	5	6				

REVISIONS RECORD				
SYM	DESCRIPTIONS	DATE Y/M/D	WHO CHANGE DR.NAME	CHECKER
△1				
△2				
△3				


<div>TOMAS TECH</div>					TITLE : Cover		
					Drawing Machine Layout : xxx		
APPROVED	CHECKED	CHECKED	DESIGNED	DRAWN	SIZE A3	FSCM NO.	Document No. SCH_PJ240020_REV01
				Mr. Phatthadon	SCALE 1 : 1		SHEET A / 6

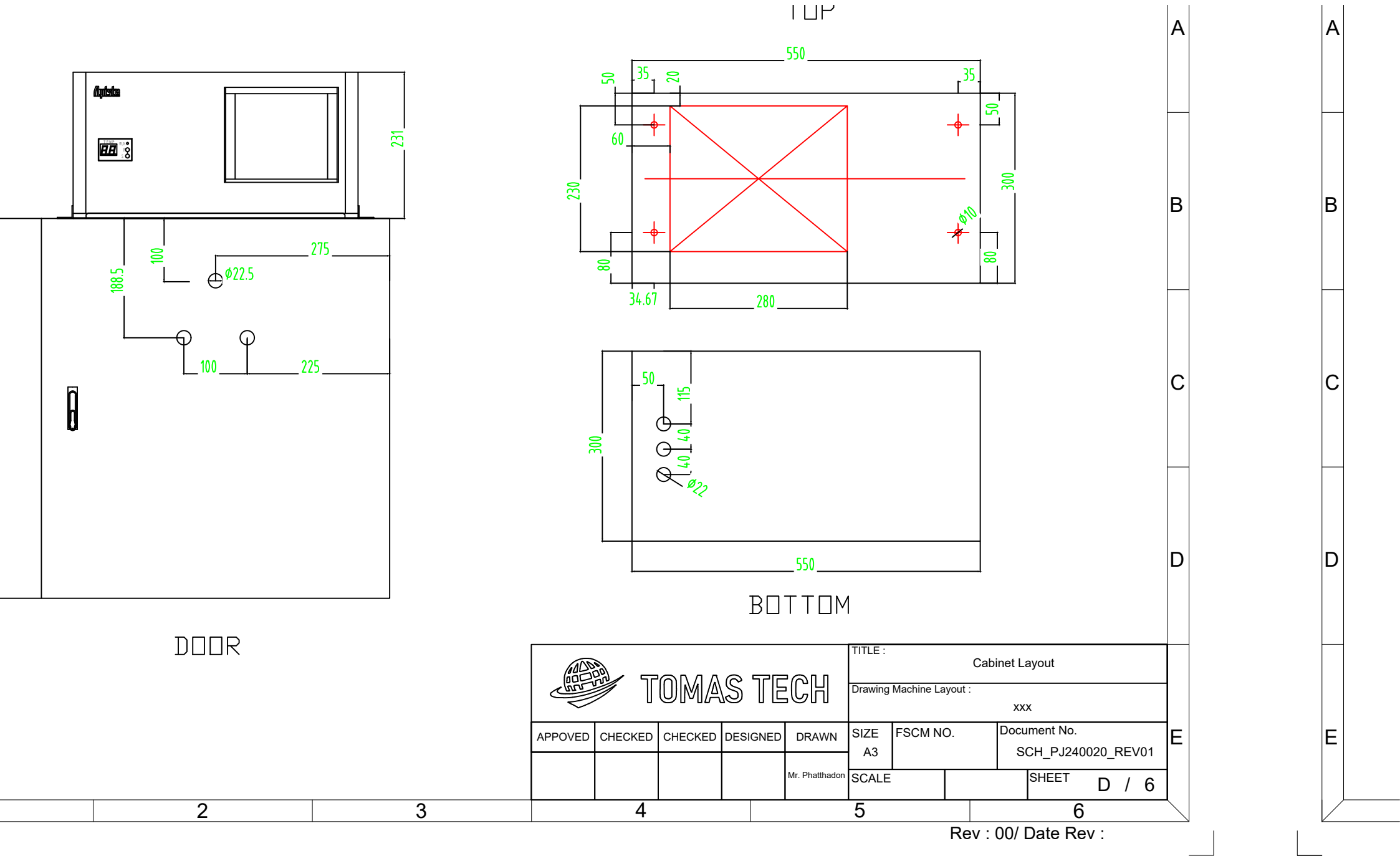


<div></div> <div>TOMAS TECH</div>					TITLE : Cabinet Layout		
					Drawing Machine Layout : xxx		
APPROVED	CHECKED	CHECKED	DESIGNED	DRAWN	SIZE A3	FSCM NO.	Document No. SCH_PJ240020_REV01
				Mr. Phatthadon	SCALE		SHEET B / 6




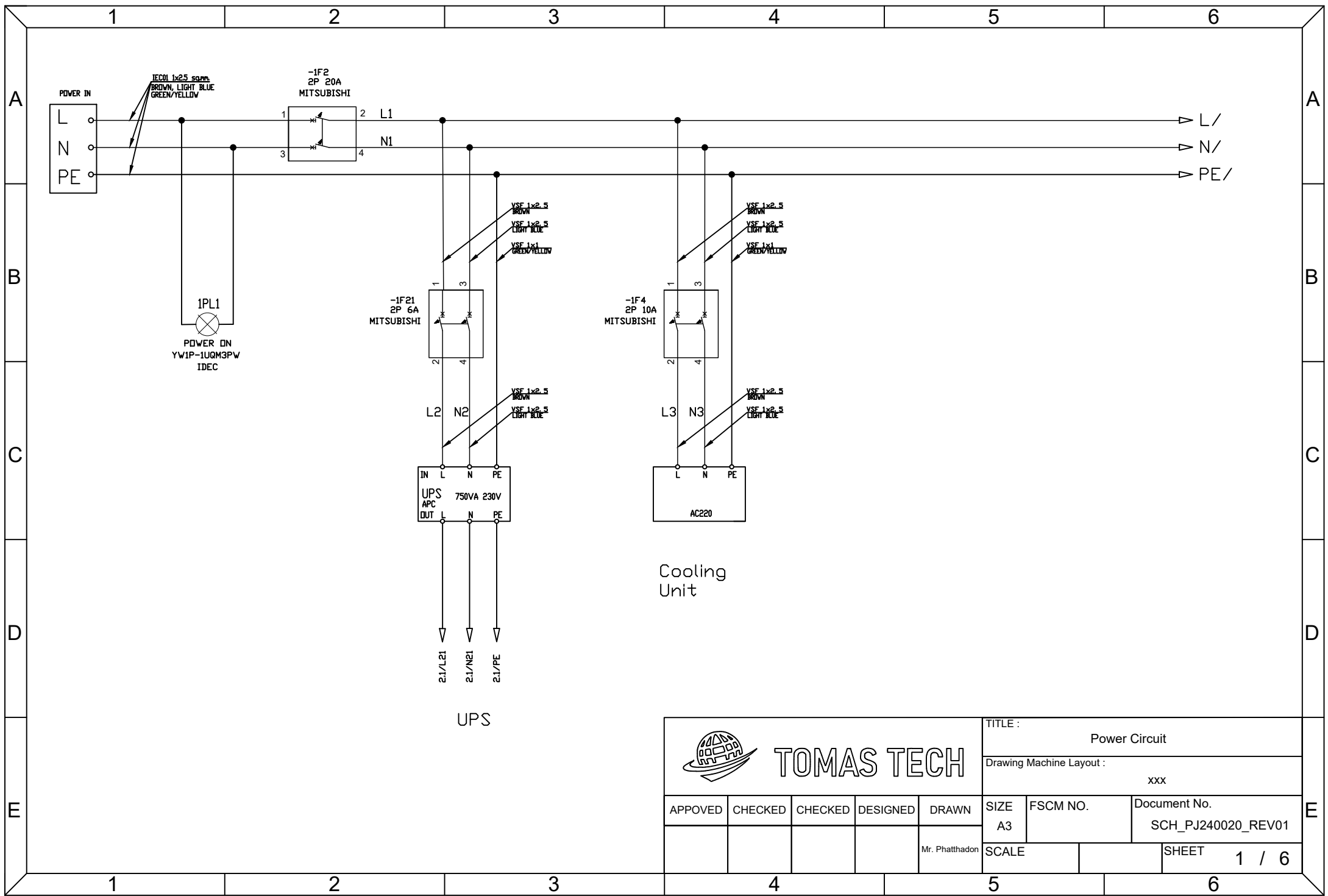
PLATE

<div></div> <div>TOMAS TECH</div>					TITLE : Cabinet Layout		
					Drawing Machine Layout : xxx		
APPROVED	CHECKED	CHECKED	DESIGNED	DRAWN	SIZE A3	FSCM NO.	Document No. SCH_PJ240020_REV01
				Mr. Phatthadon	SCALE		SHEET C / 6



No.	Description	Part Name	Brand	Note	Q'ty	Unit
1	Control Panel Cooling unit, Freon-ga, Standard ,Top-mounting, Single-phase AC100 ,H230×W450×D250, Consumption Current: Rated(A) 3.3/3.0 , Consumption Current: MAX(A) 3.6/3.9 ,Starting Current(A) 7.4/7.7	ENC-G510EX	Apiste	มีสาย Alarm Output/ AC200 เปลี่ยน	1	PC
2	(MCCB) NF-FAU Series (NF30-FAU 2P 20A)	NF30-FAU 2P 20A	Mitsubishi	CB main	1	PC
3	Miniature Circuit Breakers (MCB) BH-D6 Series ,2P 10A	BH-D6 2P 10A	Mitsubishi	CB for Cooling unit	1	PC
4	Miniature Circuit Breakers (MCB) BH-D6 Series ,2P 6A	BH-D6 2P 6A	Mitsubishi	CB for Input UPS	1	PC
5	Miniature Circuit Breakers (MCB) BH-D6 Series ,2P 4A	BH-D6 2P 4A	Mitsubishi	CB for Output UPS	1	PC
6	Miniature Circuit Breakers (MCB) BH-D6 Series ,1P 2A	BH-D6 1P 2A	Mitsubishi	CB for Power Supply DC	1	PC
7	PLC CPU Unit	KV-8000	KEYENCE		1	PC
8	Data Utilization Unit	KV-XD02	KEYENCE		1	PC
9	RS48S Module	KV-XL402	KEYENCE		1	PC
10	Module bus convert	KV-7000C	KEYENCE		1	PC
11	Module Output	KV-B16TD	KEYENCE		1	PC
12	Industrial Switching Hubs 10/100/1000Base-T	MES-G5RJ-ST	MISUMI		1	PC
13	YW1P-1UQM3PW IDEC LAMP LED 220V	YW1P-1UQM3PW	IDEC	ต้องเปลี่ยน part name	1	PC
14	YW1P-1UQ4G IDEC LAMP LED 24V	YW1P-1UQ4G	IDEC	lamp : normal	2	PCS
15	YW1P-1UQ4R IDEC LAMP LED 24V	YW1P-1UQ4R	IDEC	lamp : Abnormal		
16	APC Back-UPS, 750VA, Tower, 230V, 2 Universal + 1 IEC C13 outlets, AVR	BX750MI-MS	APC		1	PC
17	Switching Power Supply	S8VK-C12024	Omron		1	PC
18	Fan 3.5" 24VDC	WB922H7PI-D2L-G	Windstorm		2	PCS
19	Grille G-92	G-92	Windstorm		2	PCS
20	Filter WFP-802	WFP-802	Windstorm		2	PCS
21	WIRE DUCT W40 mm. x H40 mm. L2000 mm.	WD4040-8	BANDEX	2060mm	2	PCS
22	DIN Rails (DNR314-1000) 35mm. Length 1000mm	DNR314-1000	MISUMI	1020mm	2	PCS
23	Control Cabinet W500 x H600 x D250 (mm) , plate W420 x H520 (mm)	RA25-56TH	Nitto		1	PC
24	Terminal IDEC BN15LW 21A	BN15LW	IDEC		20	PCS
25	END PLATE Terminal IDEC BNE15W	BNE15W	IDEC		2	PCS
26	STOPPER Terminal IDEC BNL6	BNL6	IDEC		2	PCS
27	Non- Insulated Spade terminal 0.5 - 1.5 sq.mm. Screw M3	Y1.5-3s	T-LUG	1 pack = 100 pcs	1	pack
28	Non- Insulated Spade terminal 1.5 - 2.5 sq.mm. Screw M3	Y2.5-3s	T-LUG	1 pack = 100 pcs	1	pack
29	Non- Insulated Spade terminal 1.5 - 2.5 sq.mm. Screw M4	Y2.5-4s	T-LUG	1 pack = 100 pcs	1	pack
30	Cord-End Sleeves 1 sq.mm.	CE1.0-8	T-LUG	1 pack = 100 pcs	1	pack
31	Cable 1 x 1 sq.mm DBU H05V-K 1Cx1.0 sqmm.DARK BLUE "Lapp"	8110023	Lapp	1 pack = 100 m	1	pack
32	Cable 1 x 1 sq.mm GN/YE H05V-K 1Cx1.0 sqmm.YELLOW/GREEN "Lapp"	8110003	Lapp	1 pack = 100 m	1	pack
33	Cable 1 x 2.5 sq.mm BN H07V-K 1Cx2.5 sqmm.BROWN "Lapp"	8120032	Lapp	1 pack = 100 m	1	pack
34	Cable 1 x 2.5 sq.mm LBU H07V-K 1Cx2.5 sqmm. Light Blue "Lapp"	11389705	Lapp	1 pack = 100 m	1	pack

 <b>TOMAS TECH</b>					TITLE : Part List		
					Drawing Machine Layout : xxx		
APPROVED	CHECKED	CHECKED	DESIGNED	DRAWN	SIZE A3	FSCM NO.	Document No. SCH_PJ240020_REV01
				Mr. Phatthadon	SCALE		SHEET E / 6



TOMAS TECH

TITLE : Power Circuit					xxx		
Drawing Machine Layout :					xxx		
APPROVED	CHECKED	CHECKED	DESIGNED	DRAWN	SIZE A3	FSCM NO.	Document No. SCH_PJ240020_REV01
				Mr. Phatthadon	SCALE		SHEET 1 / 6



This diagram shows the rear view of the device. A red outline indicates the location of the battery cover latch on the left side. The battery cover is shown as a white rectangular area on the right side, with a small rectangular latch on its top edge.

PIN	DETAILS	MARK
1	SR-	SR-(1)
2	SR+	SR+(1)
3	-	-
4	-	-
5	SG	SG(1)

PIN	DETAILS	MASK
1	SR-	SR-(2)
2	SR+	SR+(2)
3	-	-
4	-	-
5	SG	SG(2)



# TOMAS TECH

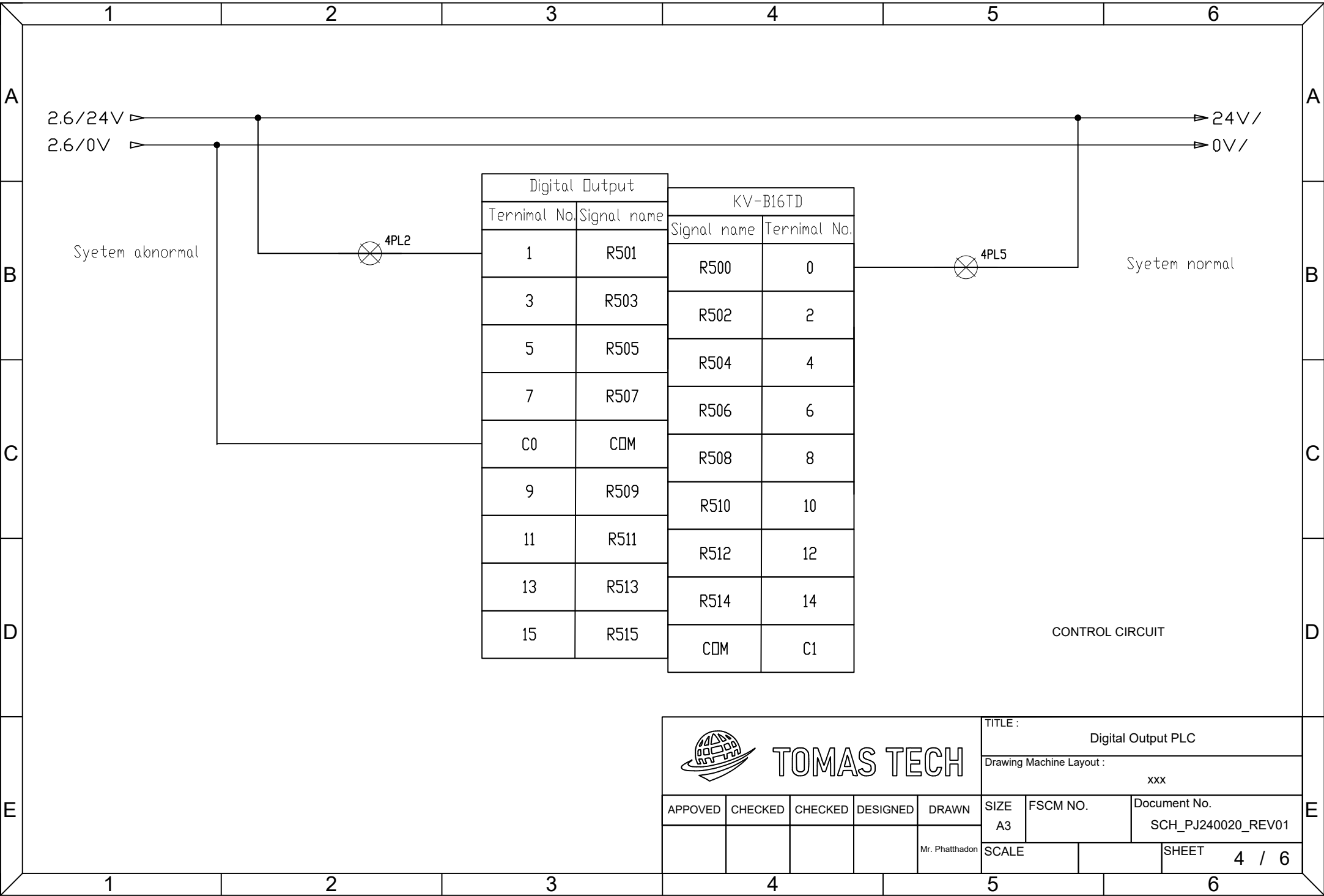
KV-XL402 Wiring

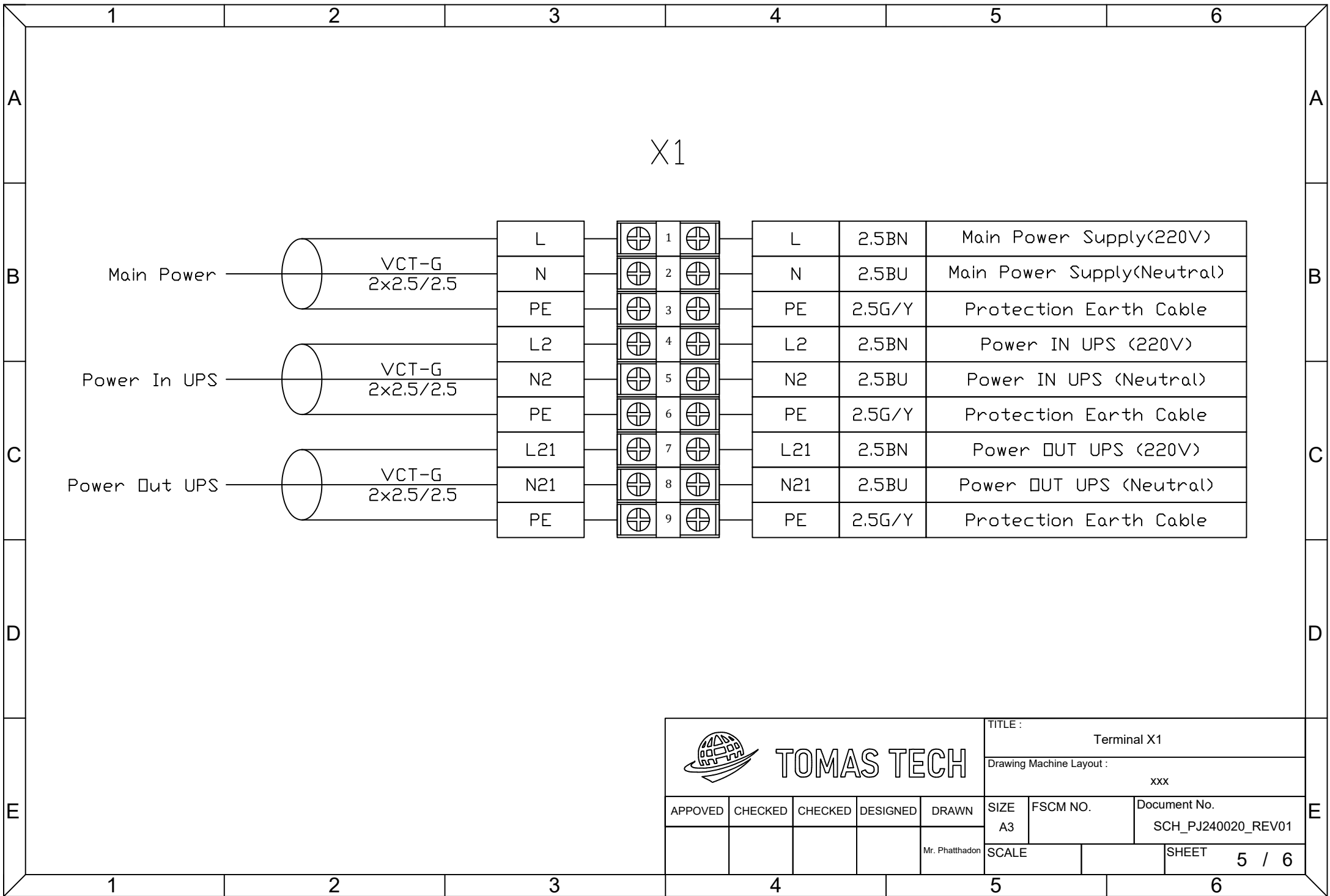
XXX

SCH\_PJ240020\_REV01

SHEET	3 / 6
-------	-------







TOMAS TECH

<div>TITLE : Terminal X1</div> <div>Drawing Machine Layout : xxx</div>					SIZE A3	FSCM NO.	Document No. SCH_PJ240020_REV01
					SCALE		SHEET 5 / 6

APPROVED	CHECKED	CHECKED	DESIGNED	DRAWN
				Mr. Phatthadon

