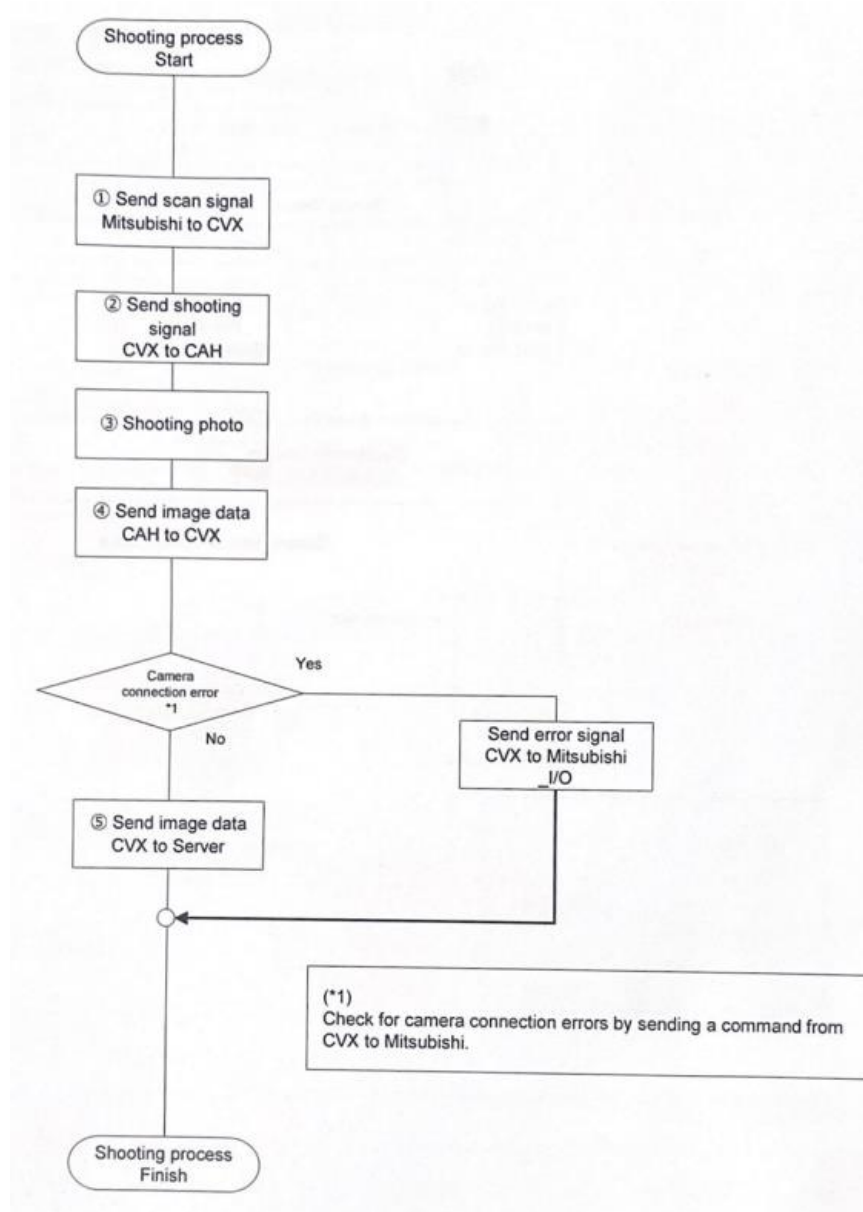
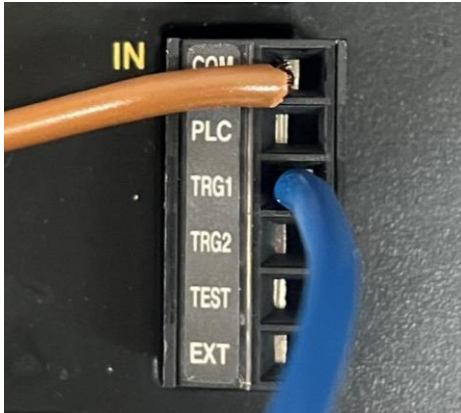


Daifuku : Test Camera CVX and send to server



① Send scan signal
Mitsubishi to CVX

- Send TRG1 signal from PLC Mitsubishi to CVX



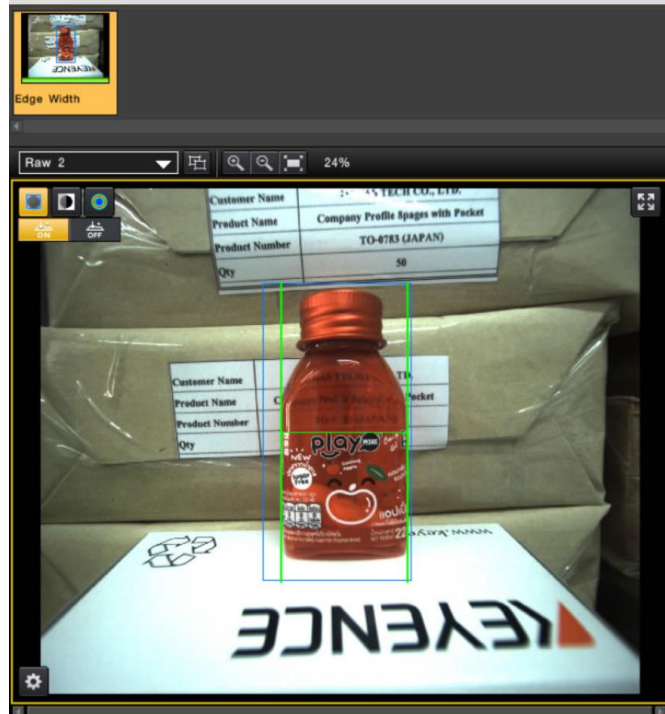
② Send shooting
Signal CVX to CAH

- CVX send TRG1 signal to the CAH to prepare for imaging



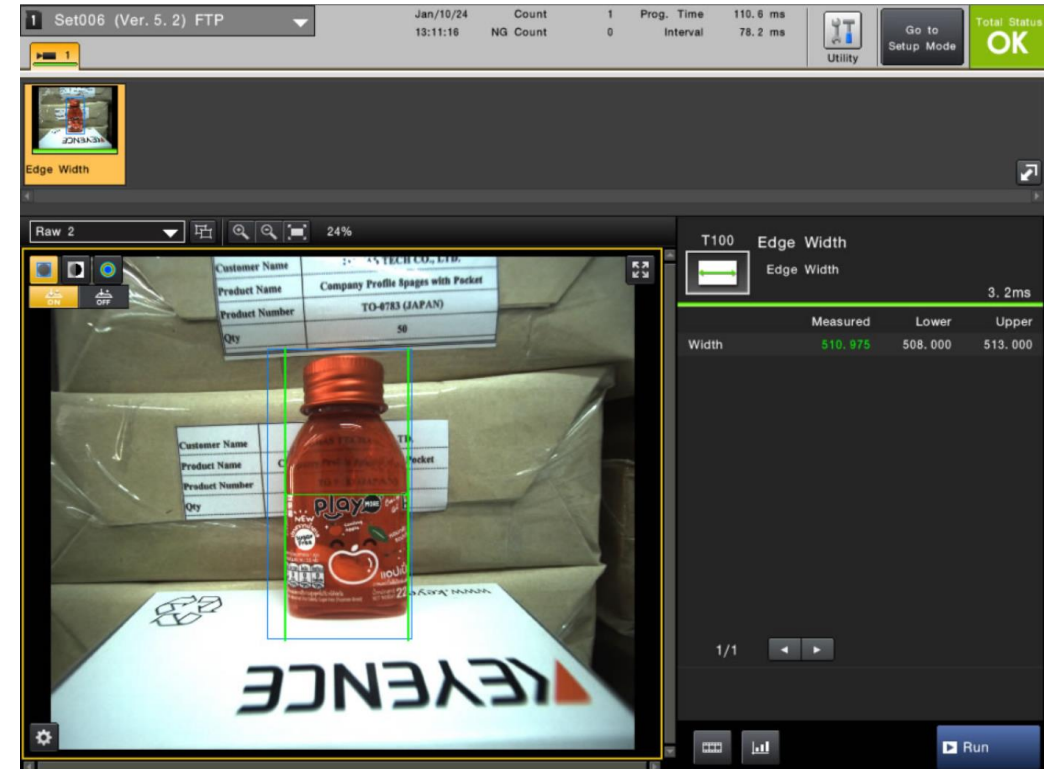
③ Shooting photo

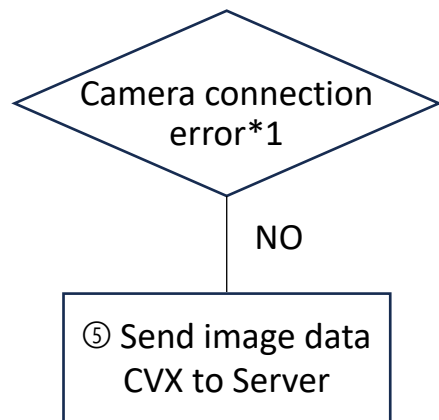
- When the TG1 signal is received, the camera will take a picture



④ Send image data CAH to CVX

- CAH send images and signal to CVX

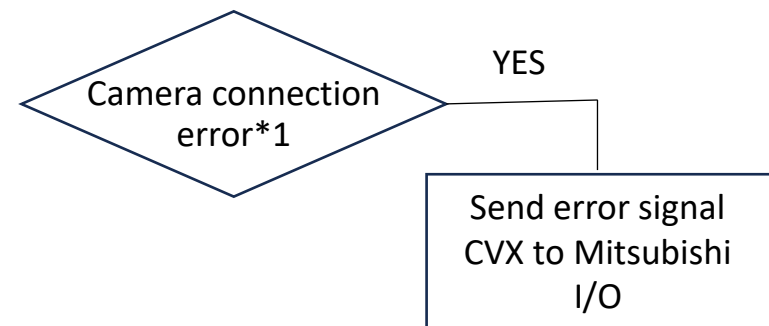




- CVX will send the image to the server

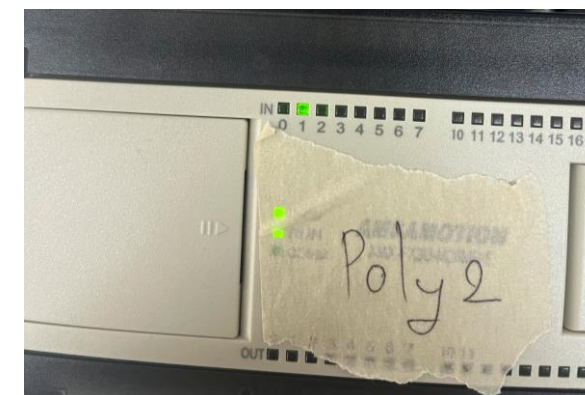
Remote site: /cv-x/image/SD1_006/240110_082424/CAM1

Filename	Filesize	Filetype	Last modifi...	Permissi...	Owner/Gr...
240110_082501_...	14,956,8...	BMP File	10/1/2567 ...		
240110_082504_...	14,956,8...	BMP File	10/1/2567 ...		
240110_082506_...	14,956,8...	BMP File	10/1/2567 ...		
240110_082508_...	14,956,8...	BMP File	10/1/2567 ...		
240110_082542_...	14,956,8...	BMP File	10/1/2567 ...		
240110_082543_...	14,956,8...	BMP File	10/1/2567 ...		
240110_082546_...	14,956,8...	BMP File	10/1/2567 ...		
240110_082547_...	14,956,8...	BMP File	10/1/2567 ...		
240110_082549_...	14,956,8...	BMP File	10/1/2567 ...		
240110_082549_...	14,956,8...	BMP File	10/1/2567 ...		
240110_082550_...	14,956,8...	BMP File	10/1/2567 ...		
240110_084746_...	14,956,8...	BMP File	10/1/2567 ...		
240110_084756_...	14,956,8...	BMP File	10/1/2567 ...		
240110_084805_...	14,956,8...	BMP File	10/1/2567 ...		
240110_102038_...	14,956,8...	BMP File	10/1/2567 ...		
240110_102038_...	14,956,8...	BMP File	10/1/2567 ...		
240110_102039_...	14,956,8...	BMP File	10/1/2567 ...		
240110_102039_...	14,956,8...	BMP File	10/1/2567 ...		
240110_102042_...	14,956,8...	BMP File	10/1/2567 ...		



- If the camera is not available It sends an error signal to the Mitsubishi I/O PLC

☐ F_OUT0 FLASH 1
☐ F_OUT1 FLASH 2
☒ F_OUT2 ERROR
☐ F_OUT3 RUN



- Example: Connect error signal to plc Mitsubishi in channel IN1. When CVX sends signal to IN1, the light will be on.